



UK

**INSTRUMENTS, PROCESS FITTINGS, VALVES, ACCESSORIES & GAUGES**



**BICS INSTRUMENTATION LIMITED**

[sales@bics-uk.com](mailto:sales@bics-uk.com)



# INTRODUCTION

## ABOUT US

BICS INSTRUMENTATION LIMITED (U.K.) has been established in the United Kingdom since 2014.

BICS manufactures a wide range of Stainless Steel Tubings, Instrumentation Process Fittings, Needle Valves, Manifold Valves, Pressure Gauge, Temperature Gauge and Accessories.

This Catalogue is designed to be a reference manual for all those involved in the Oil & Gas, Energy, EPC contractors & Mechanical works, to provide detailed information to enable the user to make correct selection of the items.

We at BICS include our mission states the following as below.

- Quality control complies with International Standards.
- Substantial stock holding by BICS in U.A.E. To ensure orders are expedited quickly and efficiently.
- We have experienced team to assist the needs of our Clients.
- 

BICS INSTRUMENTATION LTD (U.K.) complies with all the requirements of International Quality Standards.

Our product Range.

## BICS Product Series

### FITTING SERIES:

PRECISION PIPE FITTING  
FORGED FITTING  
HOSE FITTING & ASSEMBLY  
COMPRESSION TUBE FITTING  
HYDRAULIC FITTING

### INSTRUMENTATION VALVES

NEEDLE VALVE  
MANIFOLD VALVE  
BALL VALVE  
MONO FLANGE VALVE

### ACCESSORIES

THERMOWELL ( Bar stock)  
SIPHONE  
GAUGE SAVER (Over Load Protector)  
PULSATION DAMPHNER  
GAUGE COCK  
SAMPLING CYLINDER  
AIR HEADER  
CONDENSER POT  
DIAPHRAGM SEAL

### INSTRUMENTATION PIPES & TUBES

### GAUGE & SENSOR

PRESSURE GAUGE  
TEMPERATURE GAUGE  
RTD / THERMOCOUPLE

Applicable Industries:

**OIL & GAS PLANT / RIG**

**CHEMICAL INDUSTRIES**

**PHARMACEUTICAL PLANTS**

**PROCESS INDUSTRIES**

**MARINE & SHIP YARDS**

**THERMAL POWER PLANTS**





**Needle Valve**

Material :- SS316/Monel/Hasteloy C-276  
 Sizes :- 1/4", 3/8", 1/2", 3/4", 1" BSP/NPT  
 Pressure :- 3K, 6K, 10K and 15K



**2 Way Manifold**

Material :- SS316/Monel/Hasteloy C-276  
 Sizes :- 1/4", 3/8", 1/2", 3/4", 1" BSP/NPT  
 Pressure :- 3K, 6K, 10K



**3 Way Manifold**

Material :- SS316/Monel/Hasteloy C-276  
 Sizes :- 1/4", 3/8", 1/2" BSP/NPT  
 Pressure :- 3K, 6K, 10K



**5 Way Manifold**

Material :- SS316/Monel/Hasteloy C-276  
 Sizes :- 1/4", 3/8", 1/2" BSP/NPT  
 Pressure :- 3K, 6K, 10K



**Syphon**

Material :- M.S/SS304/SS316  
 Sizes :- 1/4", 3/8", 1/2" BSP/NPT  
 Type :- O Type and U Type



**Snubber/Pulsation Dampner**

Material :- Brass and SS316  
 Sizes :- 1/4", 1/2" BSP/NPT  
 Pressure :- 6K



**Ball Valve**

Material :- SS316  
 Sizes :- 1/4", 1/2", 3/4", 1", 2" BSP/NPT  
 Pressure :- 3K, 6K and 10K



**Shut-off Valve**

Material :- Brass and SS316  
 Sizes :- 1/4", 1/2" BSP/NPT  
 Drain Port :- 1/4"



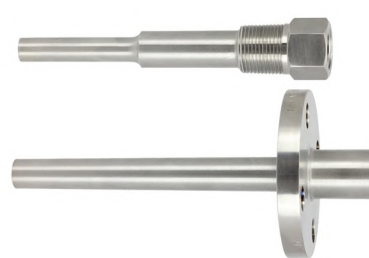
**Gauge Adapters**

Material :- Brass and SS316  
 Sizes :- All Sizes available  
 Thread :- BSP/NPT



**Gauge Cock Valve**

Material :- SS316  
 Sizes :- 1/4", 1/2", 3/4", 1", 2" BSP/NPT  
 Pressure :- 3K and 6K



**Thermowells**

Material :- Brass/SS316/Monel/Hasteloy  
 Sizes :- All Sizes available  
 Type :- Threaded/Flanged



**3 Way Ball Valve**

Material :- SS316  
 Sizes :- All Sizes available  
 Thread :- BSP/NPT





**Male Connector**

Material :- SS316  
Sizes :- All sizes available , BSP/NPT  
Pressure :- upto 6K



**Female Connector**

Material :- SS316  
Sizes :- All sizes available , BSP/NPT  
Pressure :- upto 6K



**Compression Elbow**

Material :- SS316  
Sizes :- All sizes available  
Pressure :- upto 6K



**Male Compression Elbow**

Material :- SS316  
Sizes :- All sizes available , BSP/NPT  
Pressure :- upto 6K



**Female Compression Elbow**

Material :- SS316  
Sizes :- All sizes available , BSP/NPT  
Pressure :- upto 6K



**Compression Cross**

Material :- SS316  
Sizes :- All sizes available  
Pressure :- upto 6K



**Compression Union**

Material :- SS316  
Sizes :- All sizes available  
Pressure :- upto 6K



**Compression Branch Tee**

Material :- SS316  
Sizes :- All sizes available  
Pressure :- upto 6K



**Compression End Plug**

Material :- SS316  
Sizes :- All sizes available  
Pressure :- upto 6K



**Bulk Head Union**

Material :- SS316  
Sizes :- All sizes available  
Pressure :- upto 6K



**Compression Valve**

Material :- SS316  
Sizes :- All Sizes available  
Thread :- BSP/NPT



**Ferrules and Nuts**

Material :- SS316  
Sizes :- All sizes available  
Pressure :- upto 6K



**Compression Tee**

Material :- SS316  
 Sizes :- All sizes available , BSP/NPT  
 Pressure :- upto 6K



**Elbow Female Threaded**

Material :- SS316  
 Sizes :- All sizes available , BSP/NPT  
 Pressure :- upto 6K



**Elbow M/F Threaded**

Material :- SS316  
 Sizes :- All sizes available  
 Pressure :- upto 6K



**Elbow M/M Threaded**

Material :- SS316  
 Sizes :- All sizes available , BSP/NPT  
 Pressure :- upto 6K



**Tee Female Threaded**

Material :- SS316  
 Sizes :- All sizes available , BSP/NPT  
 Pressure :- upto 6K



**Tee Male Threaded**

Material :- SS316  
 Sizes :- All sizes available , BSP/NPT  
 Pressure :- upto 6K



**Hex Nipple**

Material :- SS316  
 Sizes :- All sizes available  
 Pressure :- upto 6K



**End Plug**

Material :- SS316  
 Sizes :- All sizes available  
 Pressure :- upto 6K



**Pipe Nipple**

Material :- SS316  
 Sizes :- All sizes available  
 Pressure :- upto 6K



**Tube Clamp**

Material :- GI/SS316  
 Sizes :- All sizes available



**Check Valve**

Material :- SS316  
 Sizes :- All Sizes available  
 Pressure:- Upto 10K



**Elbow & Tee High Pressure**

Material :- SS316  
 Sizes :- All sizes available  
 Pressure :- upto 15K





**Pressure Gauge**

Dial Sizes :- 1-1/2", 2", 2-1/2" and 4"  
 Body :- Black  
 Connection :- Brass



**Pressure Gauge**

Dial Sizes :- 1-1/2", 2", 2-1/2" and 4"  
 Body :- Stainless Steel  
 Connection :- Brass



**Pressure Gauge**

Dial Sizes :- 1-1/2", 2", 2-1/2", 4" and 6"  
 Body :- Stainless Steel  
 Connection :- Stainless Steel



**Capsule Gauge**

Dial Sizes :- 2-1/2", 4" and 6"  
 Body :- Black/Stainless Steel  
 Connection :- Brass/Stainless Steel



**Differential Pressure Gauge**

Dial Sizes :- 4" and 6"  
 Body :- Stainless Steel  
 Connection :- Stainless Steel



**Electrical Pressure Gauge**

Dial Sizes :- 4" and 6"  
 Body :- Stainless Steel  
 Connection :- Stainless Steel



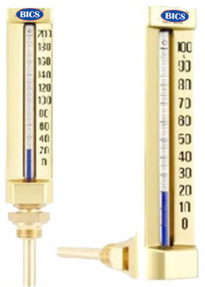
**Digital Pressure Gauge**

Dial Sizes :- 2-1/2" and 4"  
 Accuracy :- 0.25%, 0.5%  
 Reading:- Bar, PSI, MPa, MBar



**Diaphragm Pressure Gauge**

Dial Sizes :- 2-1/2", 4" and 6"  
 Type :- Threaded/Flanged  
 Diaphragm Material-SS316/Monel/Hasteloy



**V-Line Thermometer**

Body :- Brass  
 Stem Length :- All sizes available  
 Ranges :-All Ranges available



**HVAC Thermometer**

Body :- Black  
 Stem Length :- All sizes available  
 Ranges :-All Ranges available



**Bi-Metal Thermometer**

Body :- Stainless Steel  
 Stem Length :- All sizes available  
 Ranges :-All Ranges available  
 Types :- Bottom, back & every Angle



**Safety Relief Valve**

Body :- Brass and Stainless Steel  
 Sizes :- 1/4", 1/2", 3/4", 1", 1-1/2" & 2"  
 Ranges :- Upto 700 Bar



# Stainless Steel Seamless Tubing



## SEGMENTS

- Instrumentation Tubes
- Boiler Tubes
- Furnace Tubes
- Mechanical Tubes / Hollow Bars
- Heat Exchanger Tubes (straight & U-tubes)
- General Tubes and Pipes
- Ni-alloy Tubing

## SPECIFICATIONS

EN 10216-5, DIN 17456, DIN 17458, DIN 17459, NF A 49-117, NF A 49-217, A 269, NF A 49-317, SEW 400, SEW 470

Vd TUV 405, Vd TUV 412, Vd TUV 418, Vd TUV 421, Vd TUV 434, Vd TUV 497, Vd TUV 502, Vd TUV 508, Vd TUV 546, Vd TUV 547, Vd TUV 550

## RANGE OF SIZES

- HOT FINISHED      OD 57.0-219.1 mm      WT 3.05-35 mm
- COLD FINISHED      OD 4.0-114.3 mm      WT 0.5-7.1 mm  
OD-12.7mm ,WT 0.5 mm7

## STEEL GRADES

- AUSTENITIC      1.4404, 1.4401, 1.4435, 1.4306, 1.4436, 1.4571, 1.4301, 1.4541, 1.4842, 1.4429, 1.4878, 1.4550, 1.4948, 1.4539, 1.4547
- FERRITIC/ MARTENSITIC      1.4000, 1.4006, 1.4002
- AUSTENITIC/ FERRITIC (DUPLEX)      1.4462, 1.4410, 1.4501
- NICKEL ALLOYS      1.4876, 2.4816, 2.4856, 2.4858



**INSTRUMENTS,  
PROCESS FITTINGS,  
VALVES, ACCESSORIES  
AND GAUGES**



**UK**

**BICS INSTRUMENTATION LIMITED**

Manufacturer of:  
**Instruments Fittings, Valves, ccessories & Gauges**

Unit 18, 1st Floor,  
7-15 Greatorex Street,  
Algate East, Londol E1 5NF  
United Kingdom

TEL : +44 2072 4797 78 FAX: +44 2072 4797 79  
Email: [sales@bics-uk.com](mailto:sales@bics-uk.com)